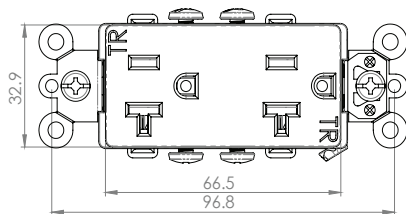
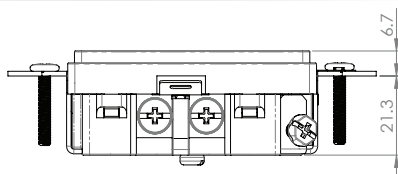
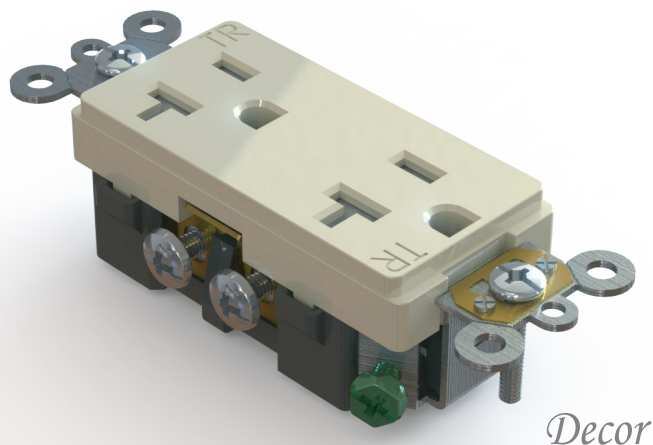


## Duplex Receptacle

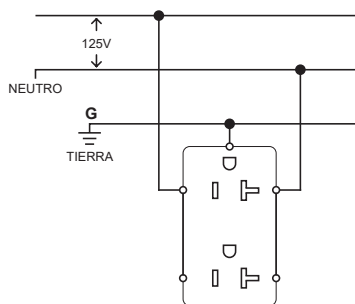
### Commercial Grade

20A 125V~ 60Hz

TR7352



### > Connection Diagram



### > General Specifications

- Tamper Resistant
- Longer and wider mounting rail
- High impact thermoplastic construction to reduce scratches and cracks
- Easy access grounding screw with hexagonal head
- Low depth design for better handling
- Allows use of independent circuits. Mounting screws included

### > Technical Specifications

- 20A 125V~60Hz
- 2 poles, 3 wires with ground connection
- 5 year warranty
- Commercial Grade
- Automatic terminals for #12 #14 wires
- Lateral terminals for #12 #14 wires
- Regular and Phillips head screws for easy installation
- Long life bronze terminals
- Two ground circuit options: screw or auto-clip
- Removable taps for better alignment
- Flammability UL 94, V2
- Operating temperatures between -40 C and 75 C

### > Tests and product certifications

- NOM-ANCE 201501A00407
- NEMA 5-20R
- UL LISTED 14LC

### > Catalogue information

- White TR7352 W
- Ivory TR7352 V
- Black TR7352 BK
- Light Almond TR7352 LA



TR7352 W 7441109015589  
 TR7352 V 7441109018290  
 TR7352 BK 7441109018818  
 TR7352 LA 7441109019112